



WATLING
REAL ESTATE

FOR SALE

**PROMINENT FREEHOLD RESIDENTIAL DEVELOPMENT SITE
WITH PLANNING PERMISSION FOR 122 APARTMENTS**

**LAND ON THE WEST SIDE
OF NEWBOLD ROAD
RUGBY, WARWICKSHIRE
CV21 2NG**

HIGHLIGHTS

- PROMINENT FREEHOLD RESIDENTIAL DEVELOPMENT OPPORTUNITY
- FULL PLANNING PERMISSION FOR DEVELOPMENT OF 122 APARTMENTS WITH CAR PARKING
- LOCATED LESS THAN 1 MILE FROM RUGBY TOWN CENTRE
- LESS THAN A 15 MIN WALK FROM RUGBY RAILWAY STATION AND JUNCTION ONE SHOPPING PARK
- IN CLOSE PROXIMITY TO VARIOUS OFSTED RATED 'OUTSTANDING' AND 'GOOD' PRIMARY AND SECONDARY SCHOOLS
- EXCELLENT PUBLIC TRANSPORTATION LINKS AND CONNECTIVITY
- OFFERS INVITED IN THE ORDER OF £1.8M



LAND ON THE WEST SIDE
OF NEWBOLD ROAD
RUGBY, WARWICKSHIRE
CV21 2NG

WATLING
REAL ESTATE

LOCATION & SITUATION

The property is located on the corner of Wood Street and the A426 Newbold Road less than 1 mile north of Rugby town centre. Newbold Road is the main arterial route through Rugby linking J1 of the M6 to the north, with J11 of the M40 via Banbury to the south.

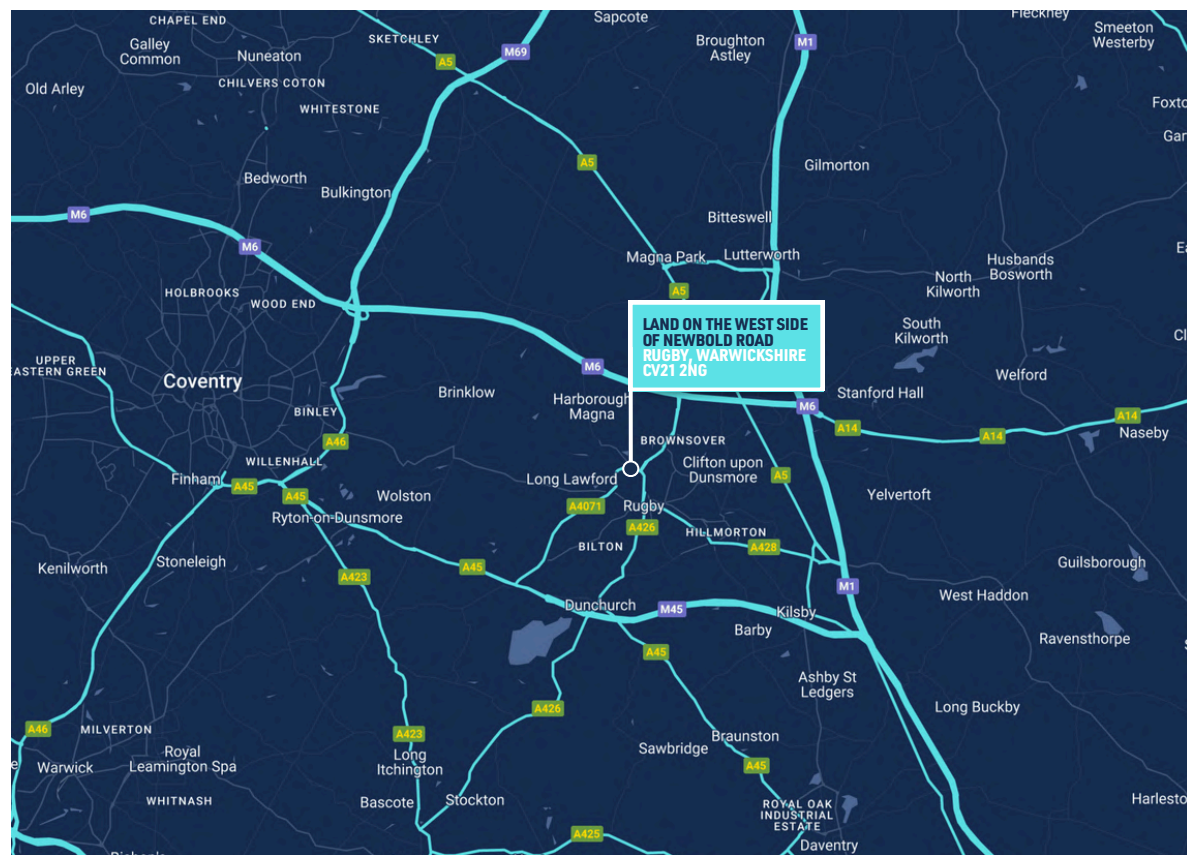
Rugby Train Station is less than a 15 minute walk from the property and provides regular and direct services to Birmingham New Street, Birmingham International, London Euston, Manchester Piccadilly, and Edinburgh.

Junction One Shopping Park and Elliott's Field Retail Park are less than 1 mile to the north east and are occupied by various major retailers, food store, and leisure operators.

The property is within walking distance of various Ofsted rated 'Outstanding' and 'Good' primary and secondary schools including Lawrence Sheriff School.

Caldecote Park and Play Area is a couple of minutes walk from the property and contains two new play areas, a multi-use sports area, and café.

The property is situated within an established and popular residential area with increasing demand from first time buyers and young professionals.





Lawrence Sheriff School

Rugby Central

Rugby School

The Site

Caldecott Park

Avon Mill Recreation Ground

Avon Valley School & Performing Arts College

Rugby Train Station

Junction One Retail Park

Elliott's Field Retail Park

A426

PROPERTY

The property comprises a vacant and substantively cleared brownfield freehold development site of approx. 1.48 acres.

The site is broadly rectangular in shape with vehicular access off Newbold Road. The site is elevated above Newbold Road and Wood Street supported by a retaining brick wall. The site is treelined to Wood Street.

There are two vacant brick-built buildings to the southern boundary and a disused bituminous and concrete surfaced car park.

The property has full planning consent for the development of a part-3, part-4, part-5 storey building comprising 122 apartments and 73 car parking spaces with associated communal services and landscaping.



**SITE AREA OF
1.48 ACRES**



**PLANNING PERMISSION
FOR 122 APARTMENTS**



**POPULAR RESIDENTIAL
LOCATION**



**LAND ON THE WEST SIDE
OF NEWBOLD ROAD
RUGBY, WARWICKSHIRE
CV21 2NG**

WATLING
REAL ESTATE

PLANNING

Full planning permission (R17/2113) was granted in 2018 for the development of a part-3, part-4 and part-5 storey building comprising 98 apartments and the provision of 61 car parking spaces with associated communal services and landscaping. A s73 application was approved in 2020 (R19/0902) to amend the approved plans in respect of the consent.

An extension of the approved 2018 scheme from 98 apartments to 122 apartments including the provision of 73 car parking spaces was granted in 2020 (R19/1496). Planning permission was granted for:

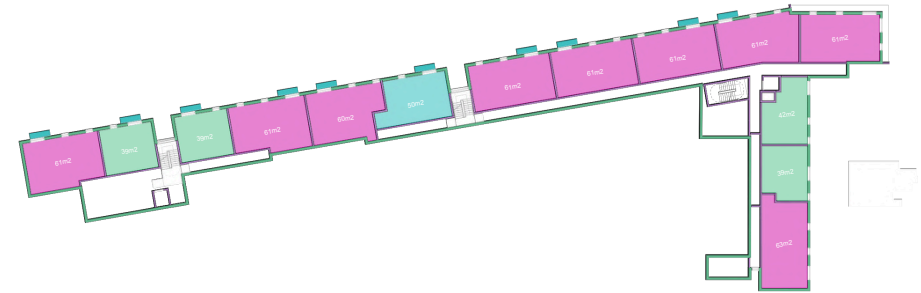
“The extension of the approved scheme at 117 Newbold Road, Rugby from 98 apartments to 122 apartments including the provision of 73 parking spaces, secure cycle and refuse storage and new planting and landscaping”.

Additional basement storage was added in 2023 (R23/0357), and later that year Condition 12 pertaining to the Construction Management Plan in respect of R19/1496 was discharged.

There are various additional planning conditions which will need to be discharged.

The planning consent is subject to a s106 agreement, which requires an indexed payment of a Sustainable Travel Packs Contribution of £7,350 to be paid to the Council prior to the commencement of development, and a TRO Contribution and TRO Extension Contribution of £3,000 each payable prior to the commencement of development and prior to first occupation respectively.

We understand there is no requirement for affordable housing and no CIL is chargeable on the proposed scheme.



Indicative Schedule for Lower Ground Floor

| Small 1-Bed (39-50m2) | | Large 1-Bed (50m-61m2) | | 2-Bed (61m2+) | |
|-----------------------|----|------------------------|----|---------------|----|
| 39m2 | x3 | 50m2 | x1 | 61m2 | x8 |
| 42m2 | x1 | | | 63m2 | x1 |

Total Indicative Schedule for Proposals

| Small 1-Bed (39-50m2) | | Large 1-Bed (50m-61m2) | | 2-Bed (61m2+) | |
|-----------------------|-----|------------------------|-----|---------------|-----|
| 39m2 | x27 | 50m2 | x17 | 61m2 | x59 |
| 40m2 | x1 | 51m2 | x3 | 63m2 | x6 |
| 41m2 | x1 | 53m2 | x4 | | 65 |
| 42m2 | x1 | | 24 | | |
| 44m2 | x2 | | | | |
| 46m2 | x1 | | | | |
| | 33 | | | | |

122apartments



Indicative Schedule for Ground Floor

| Small 1-Bed (39-50m2) | | Large 1-Bed (50m-61m2) | | 2-Bed (61m2+) | |
|-----------------------|----|------------------------|----|---------------|-----|
| 39m2 | x6 | 50m2 | x1 | 61m2 | x13 |
| 40m2 | x1 | 53m2 | x1 | 63m2 | x1 |
| 41m2 | x1 | | | | |
| 44m2 | x2 | | | | |
| 46m2 | x1 | | | | |

Total Indicative Schedule for Proposals

| Small 1-Bed (39-50m2) | | Large 1-Bed (50m-61m2) | | 2-Bed (61m2+) | |
|-----------------------|-----|------------------------|-----|---------------|-----|
| 39m2 | x27 | 50m2 | x17 | 61m2 | x59 |
| 40m2 | x1 | 51m2 | x3 | 63m2 | x6 |
| 41m2 | x1 | 53m2 | x4 | | 65 |
| 42m2 | x1 | | 24 | | |
| 44m2 | x2 | | | | |
| 46m2 | x1 | | | | |
| | 33 | | | | |

122apartments

PLANNING

The approved plans propose the development of 57 no. 1-bed and 65 no. 2-bed apartments.

The completed scheme will comprise a single L-shaped apartment building ranging from 3- to 5-storeys and will benefit from a prominent frontage to Newbold Road and Wood Street. We understand 34 of the apartments will have balconies and 8 of the apartments will have terraces. The development will have 73 parking spaces and secure cycle storage.

Additional planning information is available within the Marketing Pack.

Interested parties should rely upon their own enquiries with Rugby Borough Council.



Indicative Schedule (per typical floor)

| Small 1-Bed (39-50m2) | | Large 1-Bed (50m-61m2) | | 2-Bed (61m2+) | |
|-----------------------|----|------------------------|----|---------------|-----|
| 39m2 | x6 | 50m2 | x5 | 61m2 | x13 |
| | | 51m2 | x1 | 63m2 | x1 |
| | | 53m2 | x1 | | |

Total Indicative Schedule for Proposals

| Small 1-Bed (39-50m2) | | Large 1-Bed (50m-61m2) | | 2-Bed (61m2+) | |
|-----------------------|-----|------------------------|-----|---------------|-----|
| 39m2 | x27 | 50m2 | x17 | 61m2 | x59 |
| 40m2 | x1 | 51m2 | x3 | 63m2 | x6 |
| 41m2 | x1 | 53m2 | x4 | | 65 |
| 42m2 | x1 | | 24 | | |
| 44m2 | x2 | | | | |
| 46m2 | x1 | | | | |
| | 33 | | | | |

122partments



FURTHER INFORMATION

TITLE

Freehold (Title no. WK374876).

OFFERS

Offers in the order of £1.8m invited for the freehold interest.

VAT

Prices quoted exclusive of VAT.

COSTS

Each party will be responsible for their own professional costs incurred in the transaction.

MARKETING PACK

A Marketing Pack with additional information is available upon request.

VIEWINGS

By appointment with Watling Real Estate only.



LAND ON THE WEST SIDE
OF NEWBOLD ROAD
RUGBY, WARWICKSHIRE
CV21 2NG

WATLING
REAL ESTATE

CONTACTS

TOBY O'SULLIVAN

+44 (0) 7958 019 732
toby.osullivan@watling.com

BEN HOLYHEAD

+44 (0) 7880 137 654
ben.holyhead@watling.com

WATLING
REAL ESTATE

DISCLAIMER

Watling Real Estate hereby gives notice that the information provided either for itself, for any joint agents or for the vendors lessors of this property whose agent Watling Real Estate is in this brochure is provided on the following conditions:

1. The particulars are set out as a general outline only, for the guidance of intending purchasers and/or lessees and do not constitute an offer or contract, or part of an offer or contract. 2. All descriptions, dimensions and references to this property's condition and any necessary permission for use and occupation, and any other relevant details, are given in good faith and are believed to be correct. However, any intending purchasers or tenants should not rely on them as statements or representations of fact but satisfy themselves of their correctness by inspection or otherwise. 3. No person in the employment of Watling Real Estate, or any joint agents, has any authority to make or give any representation or warranty whatsoever in relation to the property or properties in this brochure. 4. All prices quoted are exclusive of VAT. 5. Watling Real Estate shall have no liability whatsoever in relation to any documents contained within the brochure or any elements of the brochure which were prepared solely by third parties, and not by Watling Real Estate.

Anti-Money Laundering

To comply with our legal responsibilities for Anti-Money Laundering, it will be necessary for the successful bidder to provide information necessary to complete these checks before the deal is completed. Information required will include: • Corporate structure and ownership details. • Identification and verification of ultimate beneficial owners. • Satisfactory proof of the source of funds for the buyers / funders / lessee.

Copyright

Please be advised that any plans, drawings or other materials within the marketing information pack are protected by Copyright, Patent and Warranty laws. This information should be used only for consultation or illustrative purposes. No formal reliance should be placed on the information or further copies made without the prior permission of the copyright owner

March 2025

Watling Real Estate Limited registered in England and Wales number 12274226. Registered office, 60 Cannon Street, London, England, EC4N 6NP. Regulated by RICS.